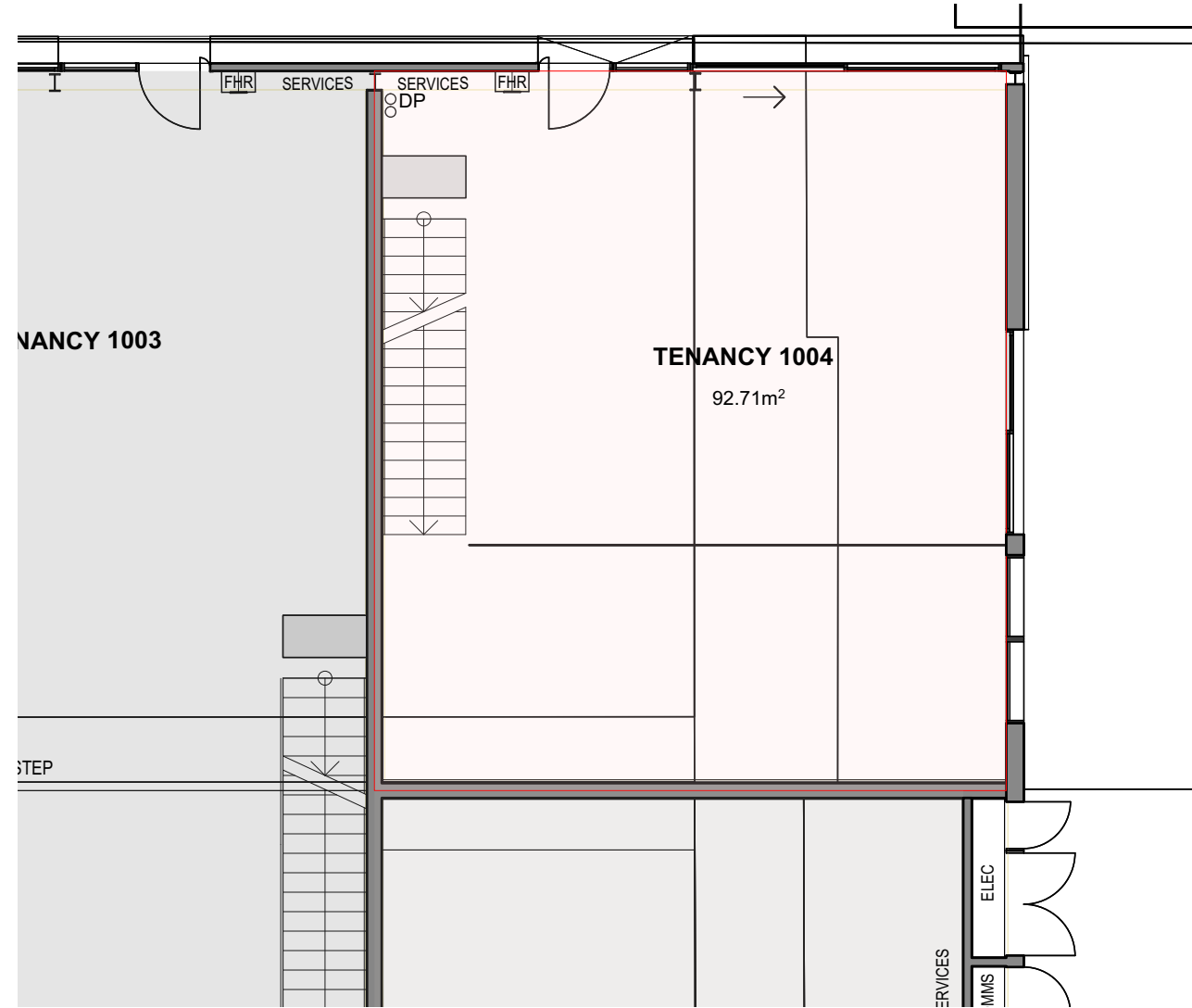


Building 10, Tenancy 1004
Ground Floor Lease Plan


Whole Floor NLA: 92.71m²
 Whole Tenancy NLA: 125.53m²



REVISION No.	DESCRIPTION	INITIALS	DATE

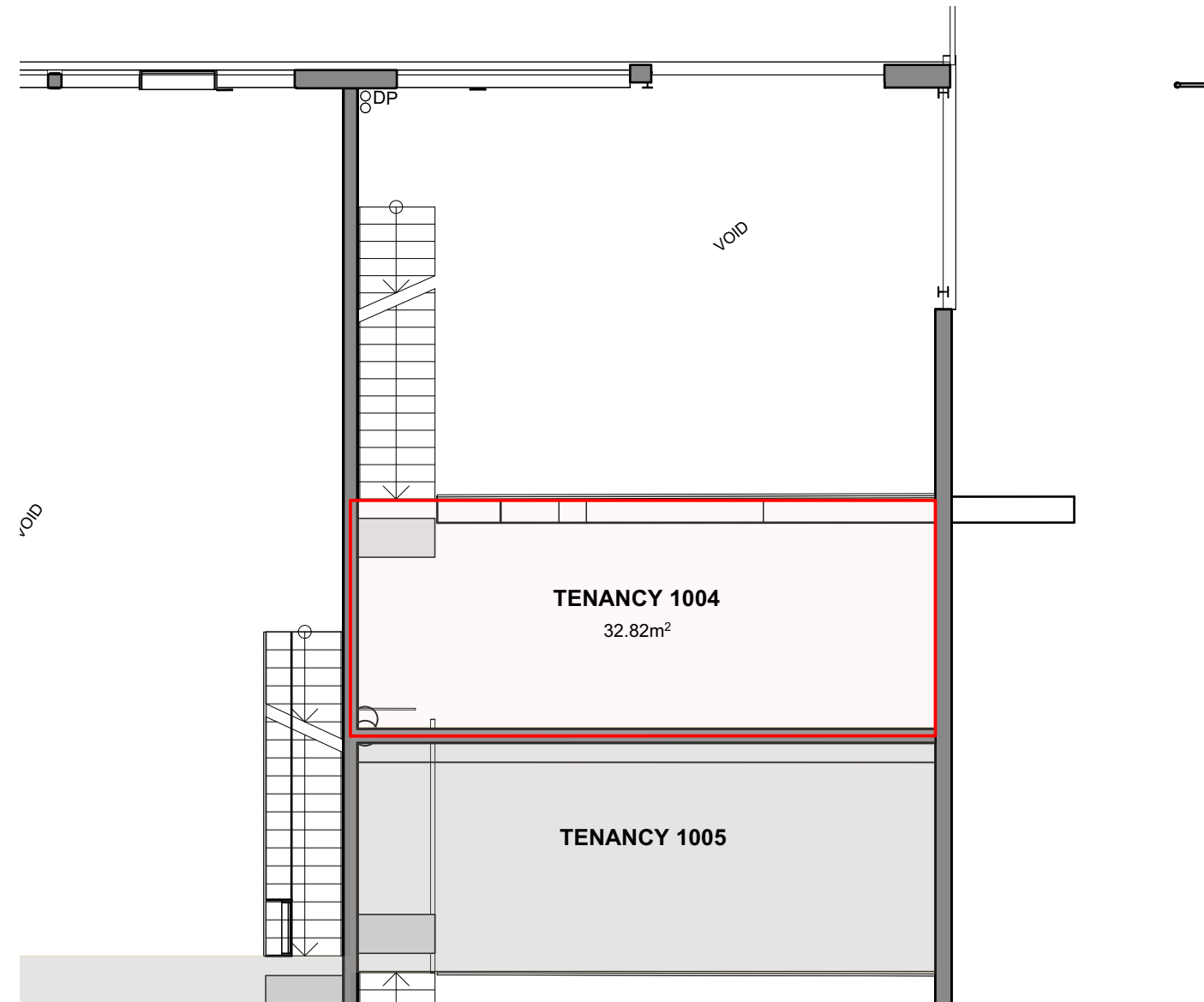
	INITIALS	DATE
DRAWN	FN	01.09.20
DWG CHECK		
APPROVED		
SHFT APPROVED		


Australian Government
Sydney Harbour Federation Trust
PO Box 607 Mosman NSW Australia 2088 Tel (+61 2) 8969 2100 Fax (+61 2) 8969 2120

SITE		Sub Base Platypus		 DWG NO 01
TITLE		Building 10 - Tenancy 1002 Ground Floor Lease Plan		
ORIG. DWG SIZE	A3	SCALE	1:100	REV A
CAD FILE NAME	PL-WL-B10-NLA Lease Plan-Tenancy 1004-20200901		PLOT DATE	

Building 10, Tenancy 1004
Mezzanine Floor Lease Plan

Whole Floor NLA: 32.82m²
 Whole Tenancy NLA: 125.53m²




REVISION No.	DESCRIPTION	INITIALS	DATE

	INITIALS	DATE
DRAWN	FN	01.09.20
DWG CHECK		
APPROVED		
SHFT APPROVED		


Australian Government
Sydney Harbour Federation Trust

PO Box 607 Mosman NSW Australia 2088 Tel (+61 2) 8969 2100 Fax (+61 2) 8969 2120

SITE		Sub Base Platypus		 01
TITLE		Building 10 - Tenancy 1004 Mezzanine Floor Lease Plan		
ORIG. DWG SIZE	A3	SCALE	1:100	REV A
FILE REF	S:\CAD Drawings\Platypus	CAD FILE NAME	PL-WL-B10-NLA Lease Plan-Tenancy 1004-20200901	
PLOT DATE			01/09/2020	