



VENUE GUIDE

Sub Base Platypus North Sydney

SUB BASE
PLATYPUS

Harbour
Trust



ACKNOWLEDGEMENT

The Harbour Trust acknowledges the Traditional Custodians of the lands, waters and sky of Sydney Harbour and of the sites under our stewardship: the Borogegal, Birrabirragal, Cammeraygal, Gadigal, Gayamagal, Wallumedegal and Wangal peoples.

Front cover: Image courtesy of Mike Chorley/Taylor Construction



CONTENTS

INTRODUCTION	5	TORPEDO FACTORY PRECINCT	12
EVENTS AND ACTIVATIONS	6	MAIN FACTORY FLOOR	14
VENUE SUMMARY BY PRECINCT	7	TERRACE	15
OVERVIEW AND CONSIDERATIONS	8	INTERPRETATION WALKWAY	16
RETORT HOUSE - BUILDING 11	10	WIRRA BIRRA PARK	17



NORTH SYDNEY

KIARA CLOSE

OBERON PARK

NORTHERN WHARF

11

BRIDGE

12

KIARA CAR PARK

17

SUBMARINE WHARF

10

WL

KC

CLIFTOP WALKWAY

2

PLATYPUS LANE

10

HIGH STREET

PLATYPUS LANE

4

1

WIRRA BIRRA PARK

KESTERTON BOARDWALK

NEUTRAL BAY

NEUTRAL BAY WHARF

BAY

KESTERTON PARK

F

NORTH SYDNEY WHARF

Legend

- Building 1 - Torpedo Factory
- Building 2 - Submarine School
- Building 4 - Gatehouse
- Building 10 - Fleet Workshop
- Building 11 - Retort House
- Building 12 - Exhauster House
- Building 13 - Coal Stores
- Building 17 - Petroleum Oil Lubricants (POL) Store



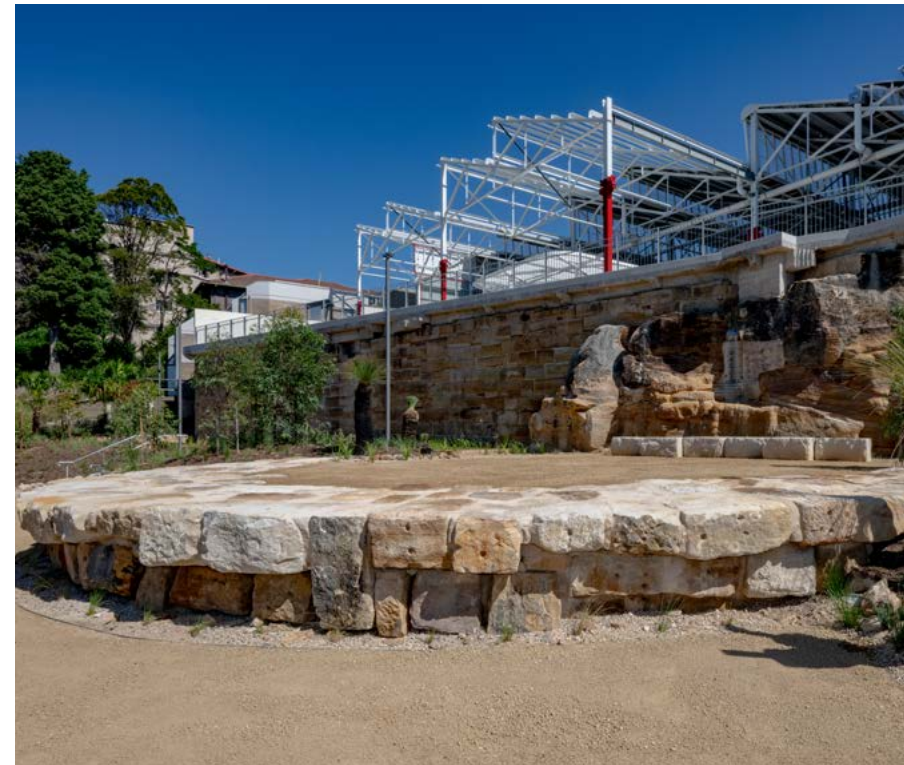
MILSONS POINT

INTRODUCTION

Formerly a torpedo factory, submarine base and gas works, Sub Base Platypus is a community recreation and work hub in North Sydney, homeland of the Cammeraygal people.

From the late 19th century, this site was a gas works providing gas for streetlights, homes and businesses along Sydney's North Shore. In 1942, as part of the war effort, the site was resumed by the Commonwealth Government to make and maintain torpedos, and to serve the naval

vessels. In 1967, the site was commissioned as the base for the Royal Australian Navy's Oberon-class submarines and was named HMAS *Platypus*. Today, the site is an active urban park space under the protection and management of the Harbour Trust.



EVENTS AND ACTIVATIONS



Image courtesy of North Sydney Council

VENUE SUMMARY BY PRECINCT

BUILDING	AREA (M ²)	CAPACITY		SURFACE	POWER	TOILETS	WATER
		STANDING (PAX)	THEATRE STYLE (PAX)				
RETORT HOUSE							
Retort House	304m ²	200	100	Concrete	✓	Nearby	✗
TORPEDO FACTORY PRECINCT							
Main	1,339m ²	800	600	Concrete	✓	✓	✓
Terrace	629m ²	200	100	Concrete	✓	✓	✓
Interpretation walkway	683m ²	250	200	Concrete	✓	✓	✓
Wirra Birra Park	1,433.5m ²	100	50	Gravel	✗	✗	✗



OVERVIEW AND CONSIDERATIONS

DRY HIRE

There is no onsite commercial kitchen, event equipment, furniture, or plant equipment. Event infrastructure will need to be brought in.

TOILETS

Public toilets at Building 2 (4 toilets, 2 ambulant toilets, 1 accessible toilet, change table and 2 showers).

2 accessible toilets in Torpedo Factory Precinct.

ACCESSIBILITY

Lift access to all levels of Sub Base Platypus.

HERITAGE SITE

Sub Base Platypus is a key site in Australia's history requiring events to be respectful in their set-up and conduct.

WATER

Access to water can be arranged, depending on need/quality.

LIGHTING

To ensure public safety, lighting is installed in all public areas of Sub Base Platypus.

SECURITY

Harbour Trust rangers and security are on site. 24 hours/7 days a week. Events may require additional security to support their activity.

WASTE MANAGEMENT

Waste management plan required. Option to use external supplier or utilise Harbour Trust contractor.

ELECTRICITY

Power is available at all buildings onsite. Limited outdoor power. Generators may be required to supplement needs.

LIQUOR PERMIT

Must be applied for through the Harbour Trust and not Independent Liquor & Gaming Authority (ILGA).

NOISE COMPLIANCE

Low levels only due to proximity to tenants.



TENANTS

Close proximity to residential and commercial tenants.

PUBLIC TRANSPORT

North Sydney Ferry Wharf is 250 metres from the High Street entrance. Both North Sydney and Milsons Point train stations are less than a kilometre's walk. Buses run every 20 minutes within 500 metres of Sub Base Platypus along Clark Road.

PARKING

Free and paid ticketed parking in the Torpedo Factory Precinct multifunctional space. Limited street parking also available. Bicycle parking spaces for site users at various points across the site. Public transport is recommended.

For more information, please contact Harbour Trust Events and Venue team at licensing@harbourtrust.gov.au.

RETORT HOUSE | BUILDING 11

The Retort House was constructed between 1886 and 1887 for the conversion of coal to gas, which essentially involved heating the coal to a high temperature in chambers, called retorts.

It is the only surviving building from the 19th century phase of gas works at this site.

EXAMPLES OF APPROPRIATE USE

Private/corporate events, small functions, filming and photography, exhibitions, workshops, music and theatre performances, fashion show, launches and dinners.

CAPACITY

200 pax standing
100 pax theatre style

SITE SPECIFICATIONS

Surface: Concrete
Power: 5 x 15amp, 1 x 32amp (3 phase)
Toilets: Available
Water: Available

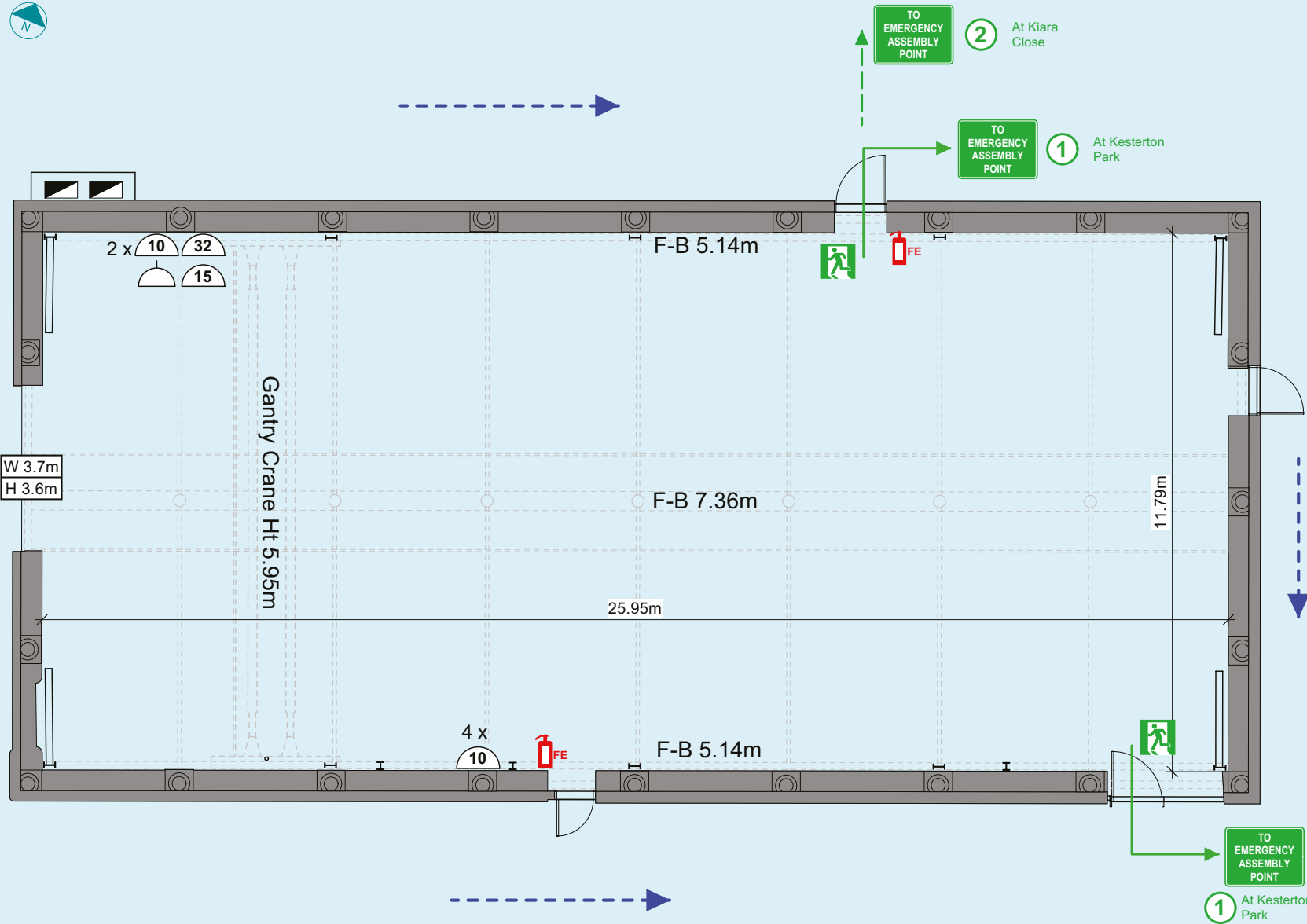
SIZE

Area: 304m²

CONSIDERATIONS

Wharf area is community zoned and access must be maintained.





LEGEND

- Dry Powder Fire Extinguisher
- Primary Escape Route
- Secondary Escape Route
- Emergency Exit
- To Emergency Assembly Point
- Door Width and Height (m)
- Distribution Board
- 32 Amp Outlet 3 Phase
- 10 Amp Outlet
- 15 Amp Outlet
- Light Switch
- Vehicle Access Path

TORPEDO FACTORY PRECINCT | MAIN FACTORY FLOOR, TERRACE, INTERPRETATION WALKWAY, WIRRA BIRRA PARK

Galvanised by the bombing of Pearl Harbour, the Commonwealth Government took possession of this site in 1942 and converted the former gas works into a torpedo factory.

Despite being the primary source of torpedoes for Allied Navies in the South Pacific, none of the torpedoes built here were ever used during the Second World War.

CONSIDERATIONS

- Asset protection – heritage and artwork
- Noise considerations for tenants and residents.
- Limited parking.
- Two accessible toilets located within the precinct.

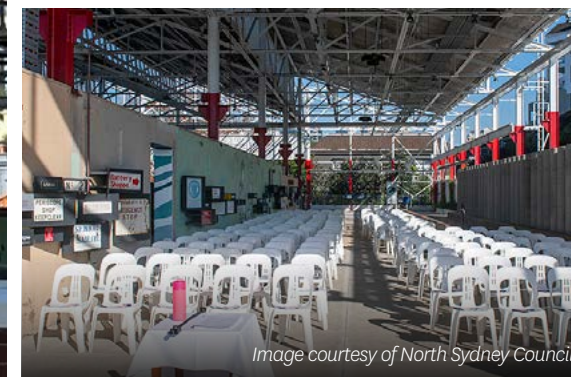
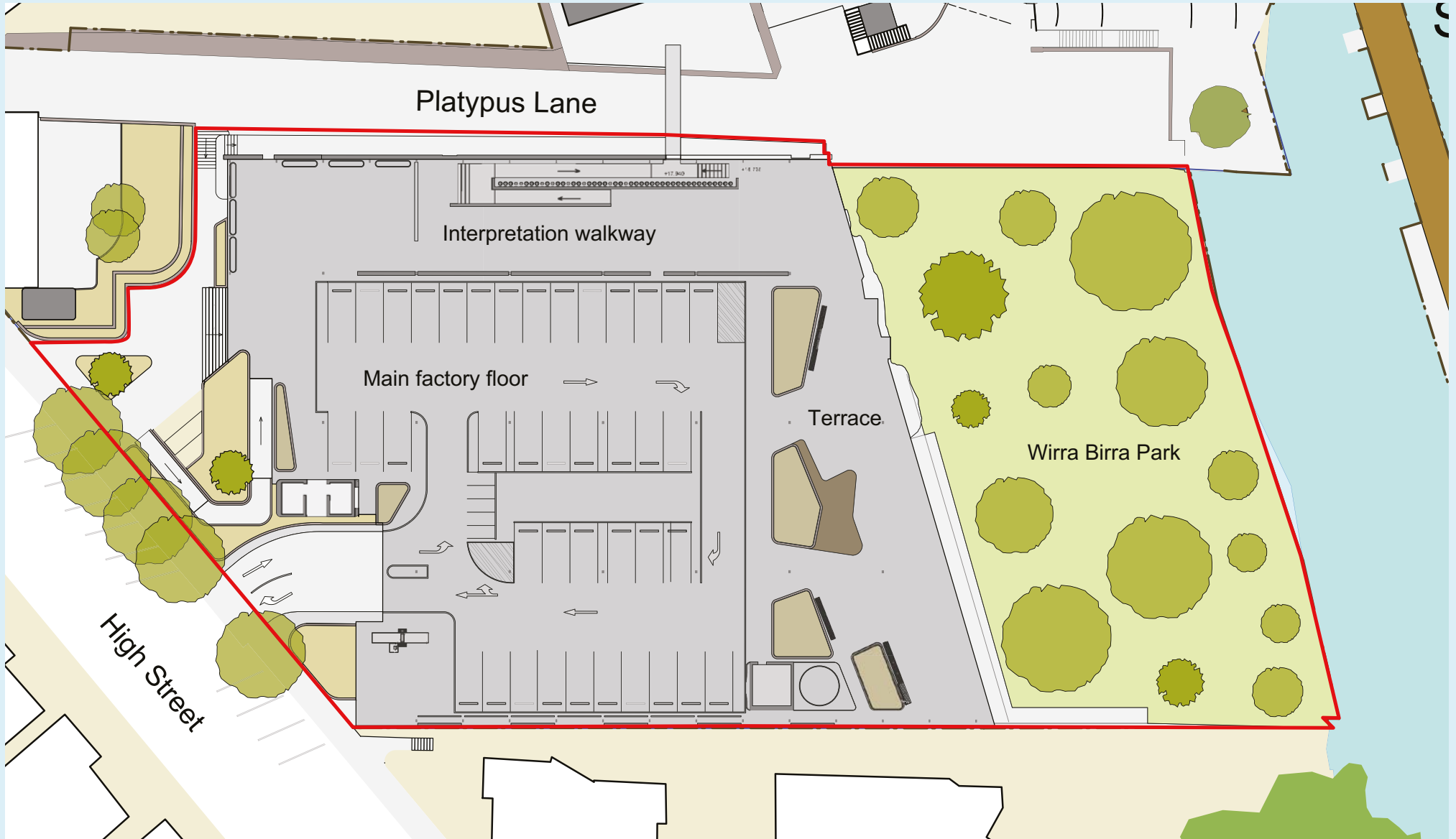


Image courtesy of North Sydney Council



TORPEDO FACTORY PRECINCT | MAIN FACTORY FLOOR

EXAMPLES OF APPROPRIATE USE

Community events, sunset sessions, artists on the harbour, school holiday programs, turf the carpark for lawn games, bespoke dinners and music/performances.

CAPACITY

800 pax standing
600 pax theatre style

SITE SPECIFICATIONS

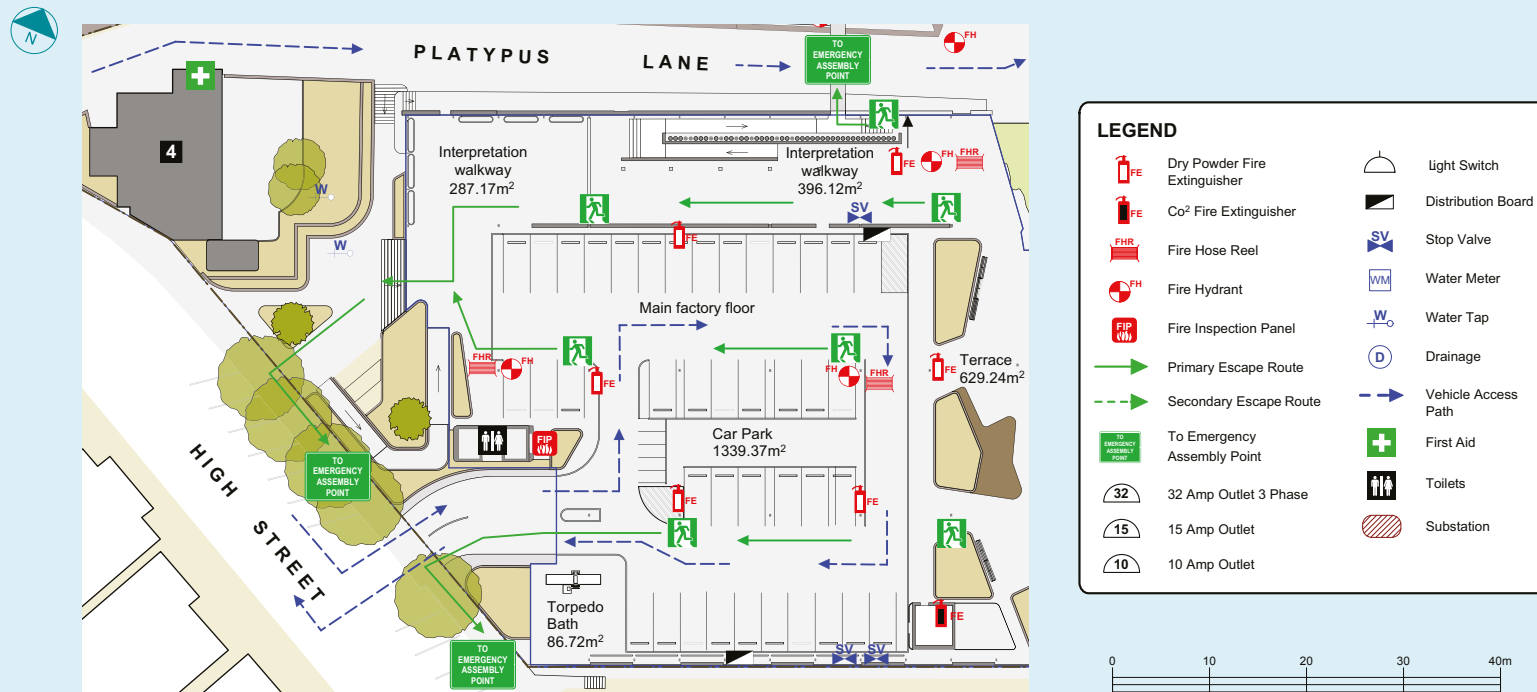
Surface: Concrete
Power: 4 x 15amp, 4 x 32amp (single phase)
Toilets: Available
Water: Available

SIZE

Area: 1,339m²

CONSIDERATIONS

Artwork/paint asset protection
Carpark infrastructure



TORPEDO FACTORY PRECINCT | TERRACE

EXAMPLES OF APPROPRIATE USE

Small gatherings, artists workshops / en plein air, public programs, wedding ceremonies.

CAPACITY

200 pax standing
100 pax theatre style

SITE SPECIFICATIONS

Surface: Concrete, painted

Power: 4 x 15amp, 4 x 32amp (single phase)

Toilets: Available

Water: Available

SIZE

629m²

CONSIDERATIONS

Artwork/paint asset protection



TORPEDO FACTORY PRECINCT | INTERPRETATION WALKWAY

EXAMPLES OF APPROPRIATE USE

Small gatherings, artists workshops, citizenship ceremonies and public programs.

CAPACITY

250 pax standing
200 theatre style

SITE SPECIFICATIONS

Surface: Concrete, painted

Power: 4 x 15amp, 4 x 32amp (single phase)

Toilets: Available

Water: Available

SIZE

Undercover: 396m²

Open air: 287m²

CONSIDERATIONS

Artwork/paint asset protection



TORPEDO FACTORY PRECINCT | WIRRA BIRRA PARK

Wirra Birra Park is situated on the sandstone bench at the foot of the new Torpedo Factory Precinct at Sub Base Platypus, North Sydney.

With First Nations principles embedded into the design, this new foreshore park will provide visitors with a landscaped space to gather and connect with Country.

EXAMPLES OF APPROPRIATE USE

Outdoor theatre, sunset sessions and wedding ceremonies.

CAPACITY

100 pax standing
50 pax theatre style

SITE SPECIFICATIONS

Surface: Gravel
Power: Available in Torpedo Factory Carpark
Toilets: Available in Torpedo Factory Carpark
Water: Not available


SIZE

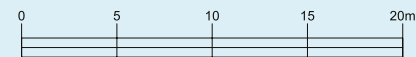
1,433.5m²

CONSIDERATIONS

No pegging



LEGEND
— Site Area: 1433.56m²  Wheelchair access





FOR MORE INFORMATION

Please contact the Harbour Trust Events and Venue team at licensing@harbourtrust.gov.au or visit www.harbourtrust.gov.au/venue-hire to fill in an application form.

Harbour Trust



Australian Government
Sydney Harbour Federation Trust

 Cockatoo
Island.



Headland
Park
MOSMAN

NORTHHEAD
— SANCTUARY MANLY —

SUB BASE
PLATYPUS