

# FOR LEASE

Suite B, Building 34, Suakin Drive  
Georges Heights, Headland Park, Mosman



Above: Location image.

**Find this great health practitioner/office space in a vibrant, eco-friendly setting nestled in Headland Park, Mosman with ample parking; surrounded by natural landscapes and incredible harbour views. Available July 2025.**

- The suite is currently configured as a health practitioner space, featuring a reception area and 2 practitioner rooms, each equipped with a treatment table. Furniture is not provided; this layout is intended for reference only.
- Fully air-conditioned
- Phone and internet enabled
- Fibre optic connections compatibility
- Natural light
- Polished floorboards
- Additional on-site shared facilities; kitchen, bathrooms, showers, a tennis court all set within beautiful parklands.



**Net lettable area**  
Suite: 31.67m<sup>2</sup> (approx.)

**Rent**  
\$17,300 per annum + outgoings + GST

## Enquiries

For further details about this property or to organise an inspection, please contact:

**Melanie Rose, Property & Leasing Manager**

0409 697 333

melanie.rose@harbourtrust.gov.au

**Claire Nolan, Leasing Officer**

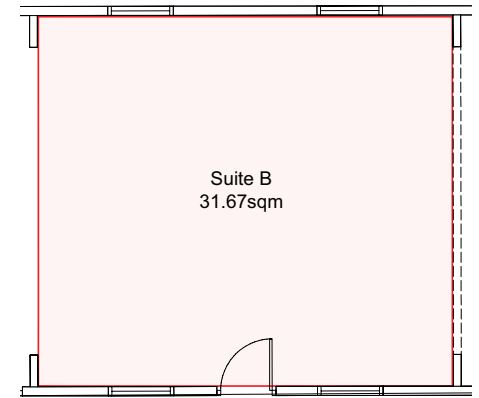
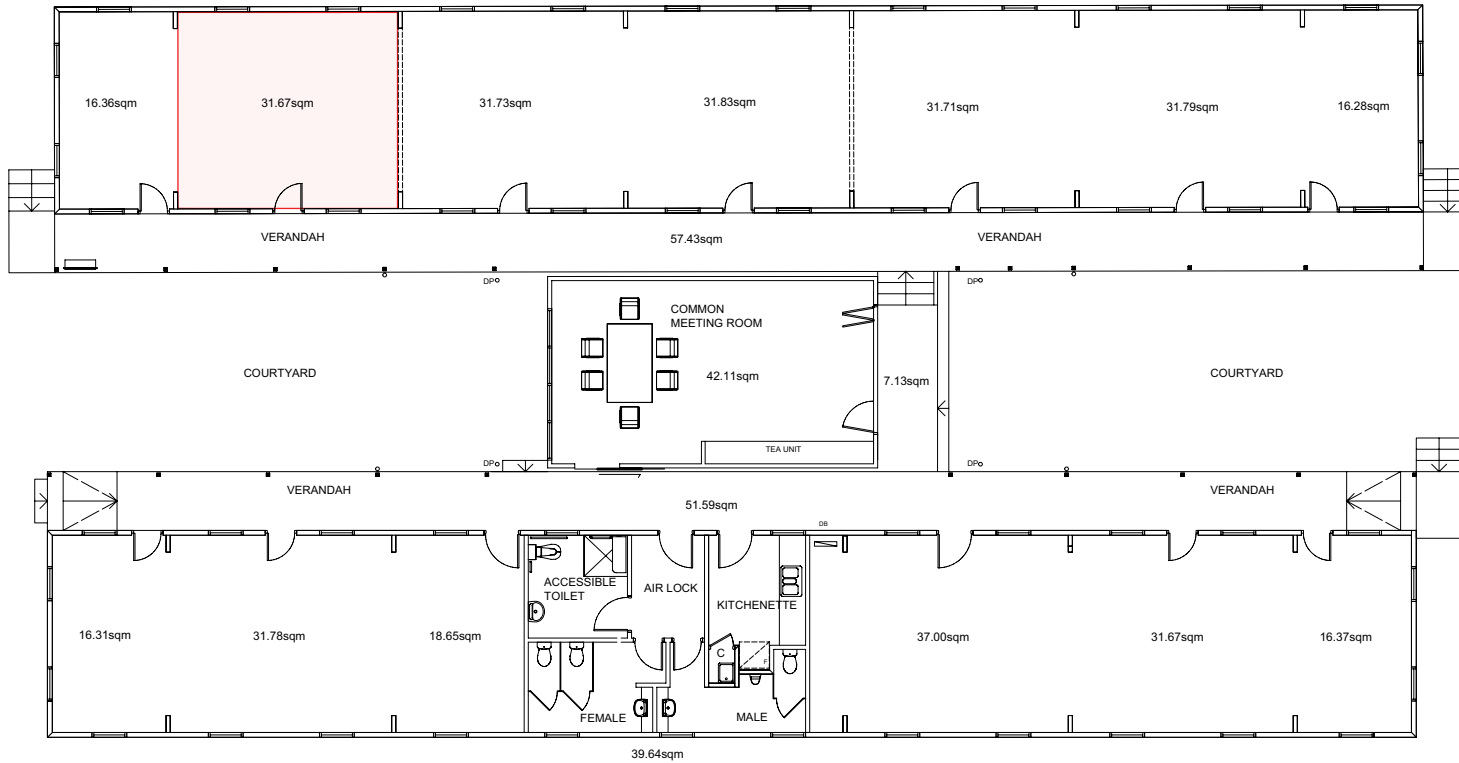
0448 110 016

claire.nolan@harbourtrust.gov.au

harbourtrust.gov.au/lease

## Map legend

- • • Main walking routes
- Harbour Trust sites



Suite B, Building 34, Suakin Drive, Georges Heights, Headland Park, Mosman