

FOR LEASE

Suite A, Building 34, Suakin Drive
Georges Heights, Headland Park, Mosman

Harbour
Trust



Above: Location image.

Find this great health practitioner/office space in a vibrant, eco-friendly setting nestled in Headland Park, Mosman with ample parking; surrounded by natural landscapes and incredible harbour views. Available July 2025.

- The suite is currently configured as a health practitioner space, featuring a reception area and a practitioner room, equipped with a treatment table. Furniture is not provided; this layout is intended for reference only.
- Fully air-conditioned
- Phone and internet enabled
- Fibre optic connections compatibility
- Natural light
- Polished floorboards
- Additional on-site shared facilities; kitchen, bathrooms, showers, a tennis court all set within beautiful parklands.



Net lettable area
Suite: 16.36m² (approx.)

Rent
\$9,850 per annum + outgoings + GST

Enquiries

For further details about this property or to organise an inspection, please contact:

Melanie Rose, Property & Leasing Manager

0409 697 333

melanie.rose@harbourtrust.gov.au

Claire Nolan, Leasing Officer

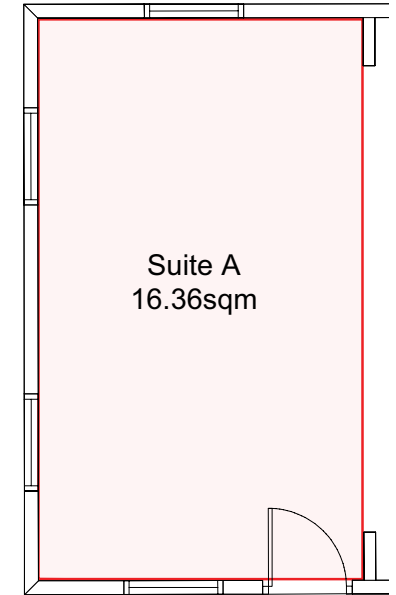
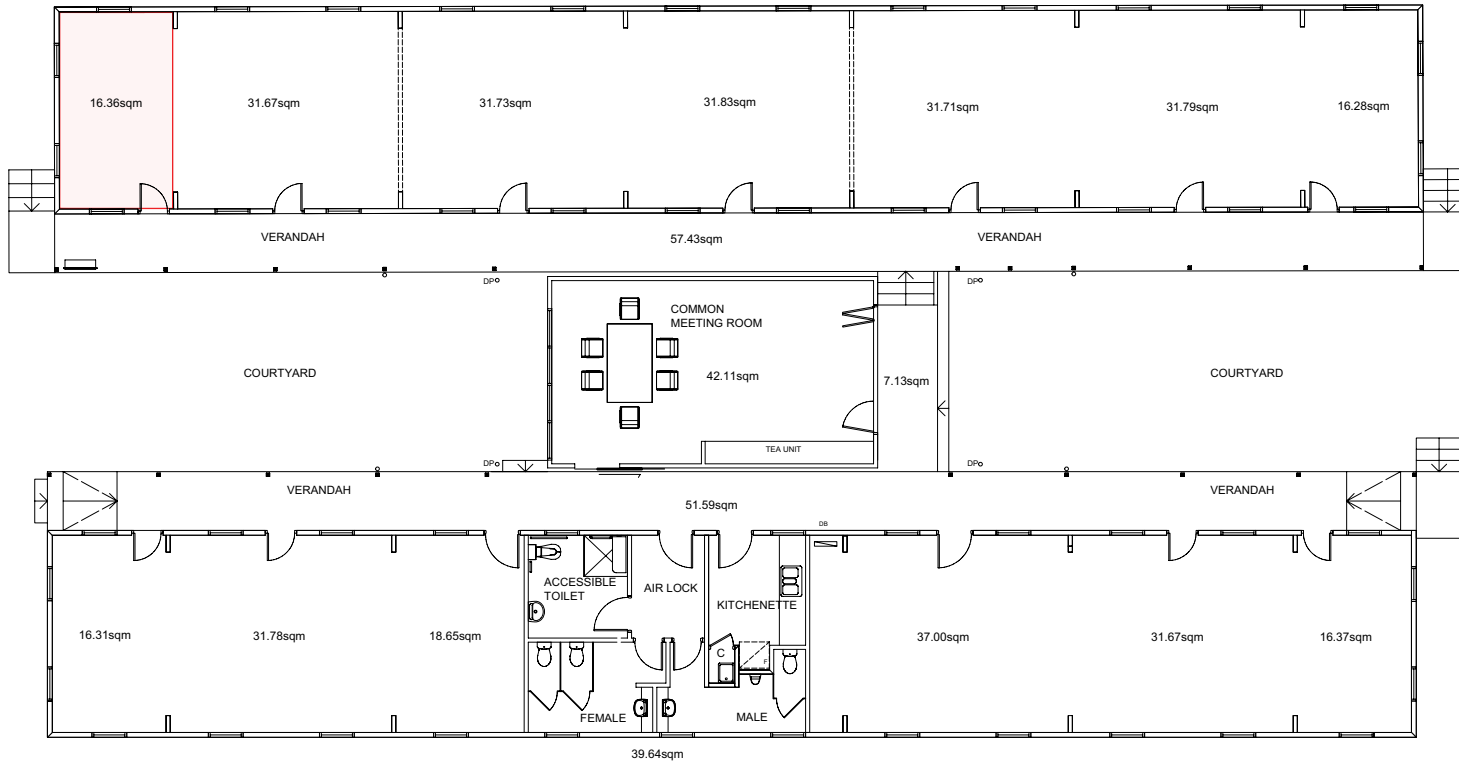
0448 110 016

claire.nolan@harbourtrust.gov.au

harbourtrust.gov.au/lease

Map legend

- • • Main walking routes
- Harbour Trust sites



Suite A, Building 34, Suakin Drive, Georges Heights, Headland Park, Mosman